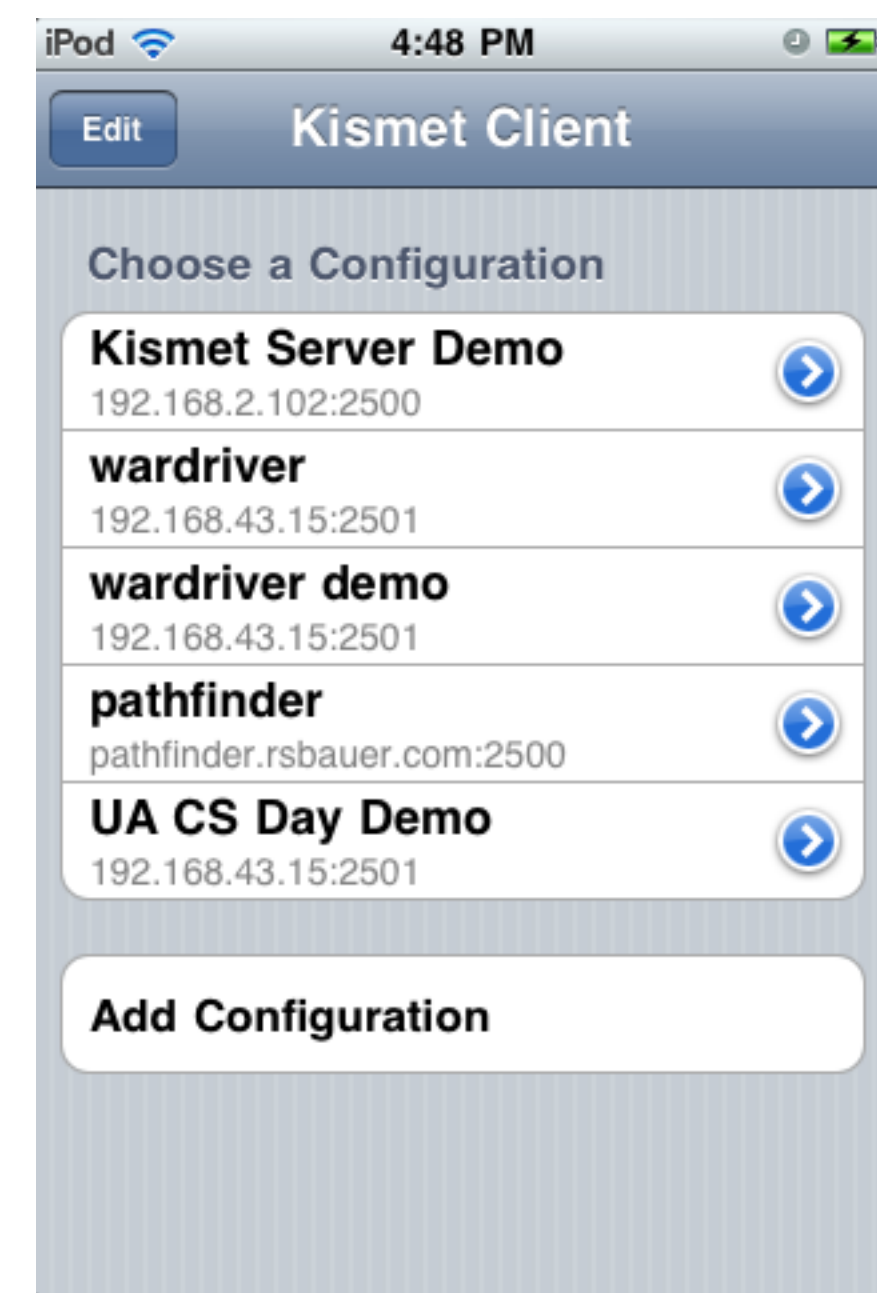
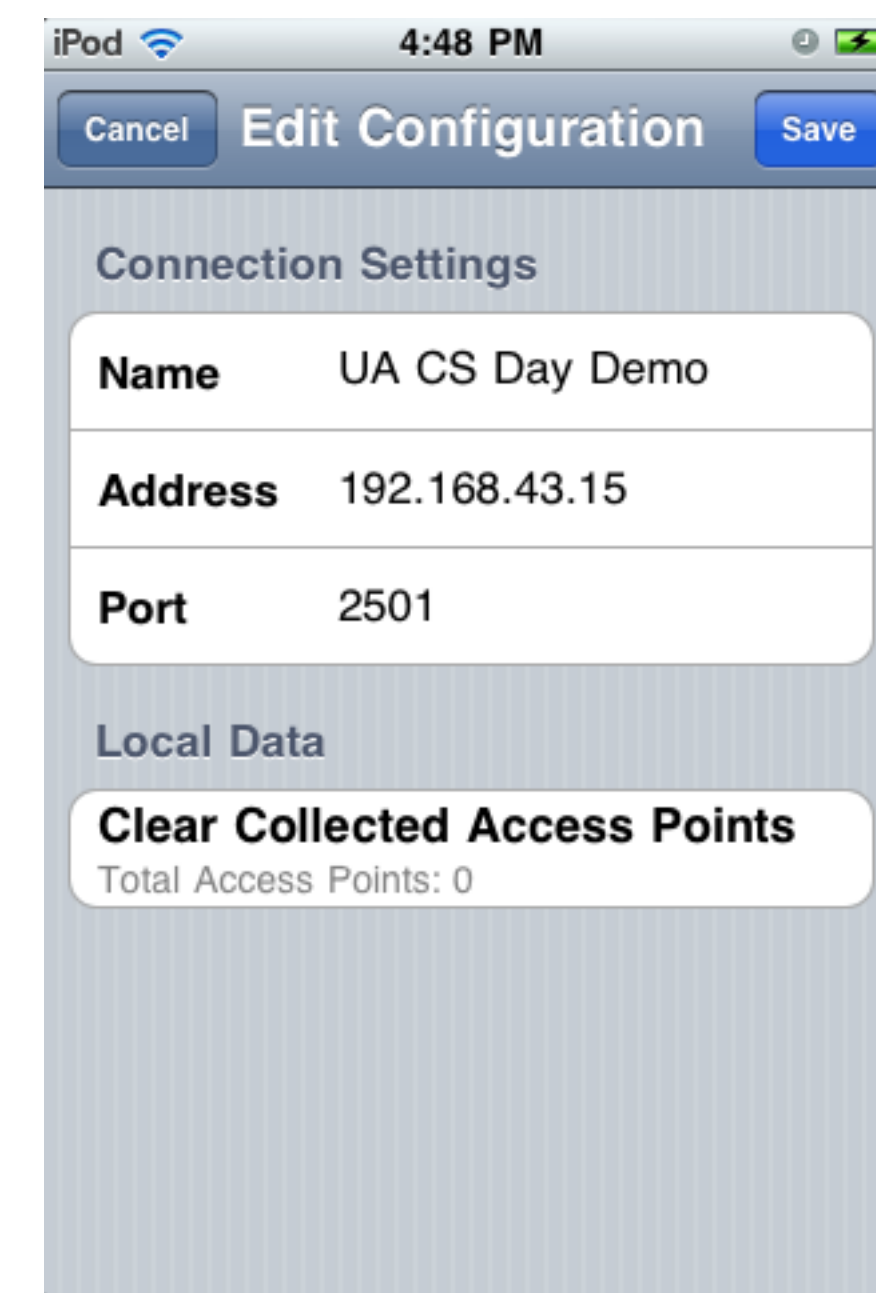


Kismet Client Screen Shots

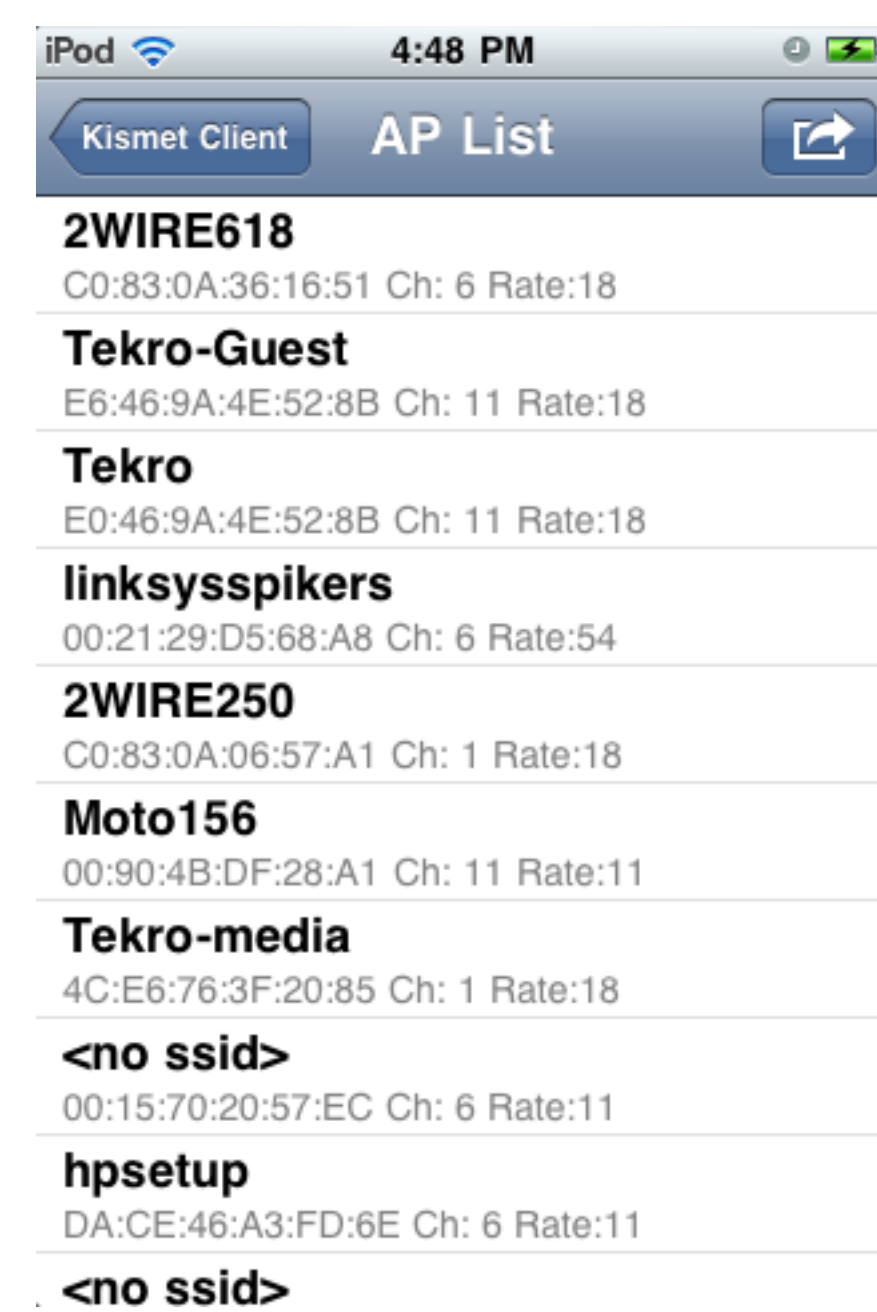
Initial screen with Kismet servers configured.



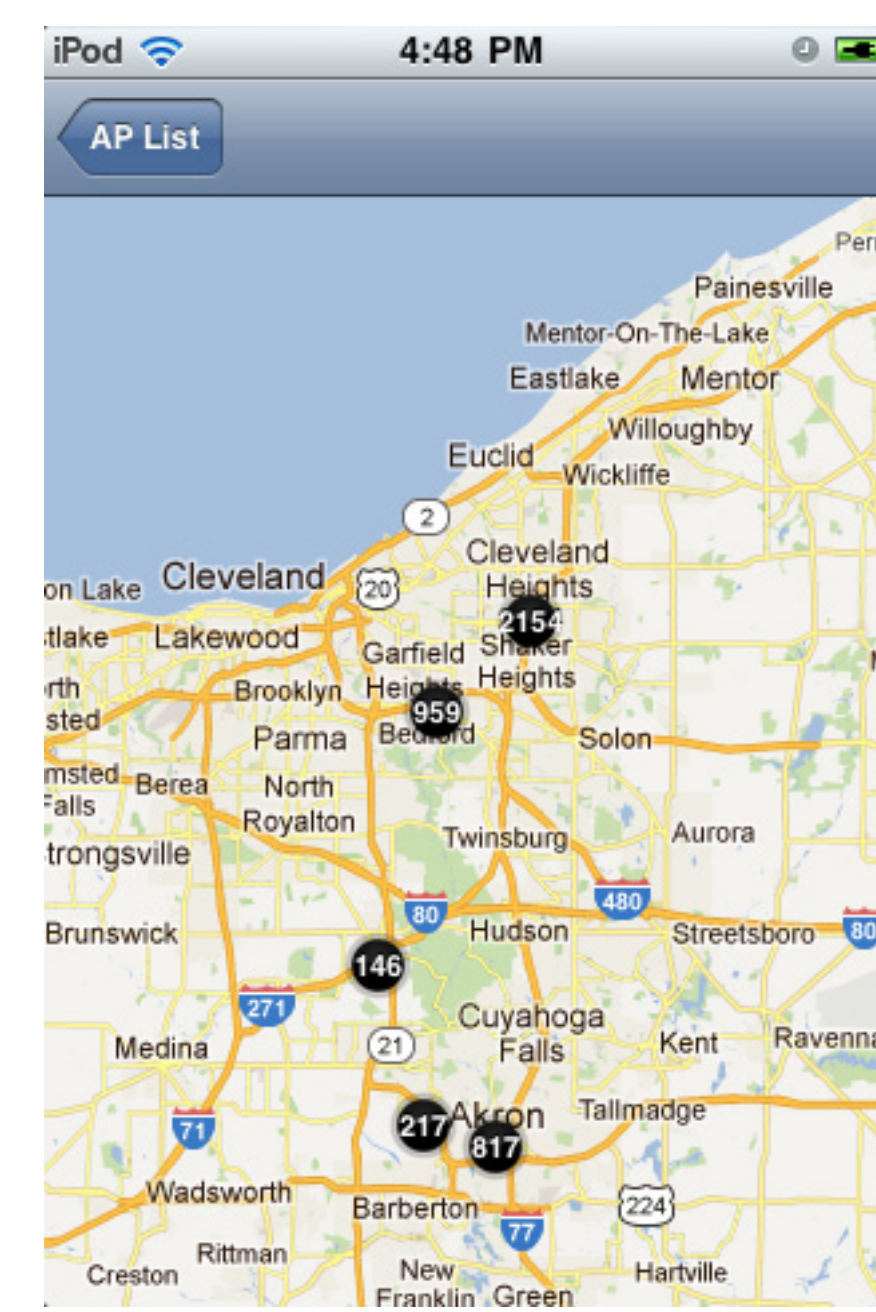
Kismet server add/edit screen.



Kismet access point view.



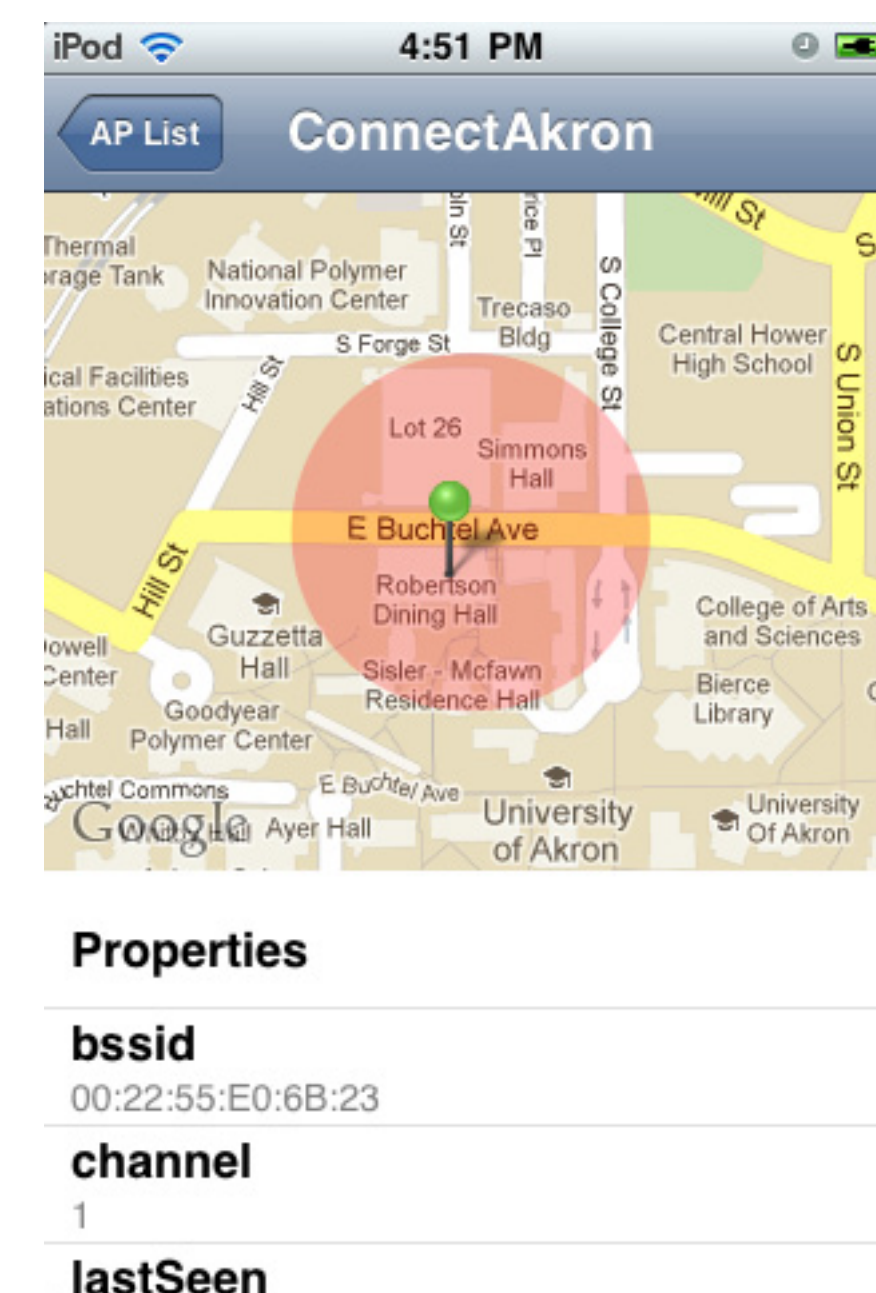
Access Point Map View



Zoomed Kismet access point view.



Access point detailed view.



Kismet Mobile Client

Robert Bauer
Senior Seminar
Dr. Chan

Abstract

The goal of this project is to create a Kismet client which could be run from a mobile device, such as an iPod, connect to a Kismet server, and monitor and review the wireless access points processed by the server. Kismet is a Unix/Linux 802.11x protocol analyzer, which has a server and client components. The client component is available to monitor and review the data the server has processed, but is a console based application and difficult to read on a mobile device.

Additional Information



Get the research paper, view this poster, and additional project details.

<http://goo.gl/2KEg3>

Contact Information



Robert Bauer

Email: bauer.rob@gmail.com

Website: rsbauer.com

View a Kismet Log Map



Kismet log mp for The University of Akron

<http://goo.gl/saVKV>

Parts List

Asus Eee Box PC, Kismet Server
Linksys WRT54G, Kismet Drone
Linksys WRTSL54GS, Wireless Bridge
Linksys WRTSL54GS, GPS receiver, Kismet Drone
iPod Touch, 3rd Generation, Kismet Client
Motorola Atrix 4G, Wireless Hotspot

